

A Quest Diagnostics Subsidiary

ACORD Implementation Guide

Version 1.8

~~~~ Official Use Only ~~~~

ExamOne, Inc. 10101 Renner Boulevard, Lenexa, KS 66219-9752, 913-888-1770 USA

© 2005 ExamOne, Inc. All Rights Reserved. May not be reproduced without written permission.  
All rights reserved.

## Table of Contents

|                                                               |    |
|---------------------------------------------------------------|----|
| Proprietary Statement .....                                   | 3  |
| Document History.....                                         | 3  |
| Section I.....                                                | 4  |
| Introduction .....                                            | 4  |
| Business Process Flow .....                                   | 5  |
| Products and Services .....                                   | 6  |
| Section II.....                                               | 8  |
| Types of Interactions.....                                    | 8  |
| Clarification of Interactions .....                           | 8  |
| Interactions Process Flows – Orders, Status and Results ..... | 9  |
| Section III.....                                              | 10 |
| Types of Transactions .....                                   | 10 |
| Order Transactions .....                                      | 12 |
| Request .....                                                 | 12 |
| Response.....                                                 | 13 |
| Status Transactions .....                                     | 14 |
| Request .....                                                 | 14 |
| Response.....                                                 | 14 |
| Results Transactions.....                                     | 15 |
| Request .....                                                 | 15 |
| Response.....                                                 | 15 |
| Overview of Transmission Options.....                         | 16 |
| Section IV .....                                              | 18 |
| Frequently Asked Questions (FAQ's).....                       | 18 |
| Glossary of Terms.....                                        | 19 |
| Appendices .....                                              | 20 |
| Appendix A – Hierarchy Diagrams .....                         | 20 |
| Appendix B – Relation Objects.....                            | 21 |
| Party to Holding: .....                                       | 21 |
| Party to Party: .....                                         | 21 |
| Holding to Holding:.....                                      | 21 |
| Appendix C – Data Maps .....                                  | 22 |
| Appendix D – Sample Order Files.....                          | 23 |
| Order Transaction .....                                       | 23 |
| Status Transaction .....                                      | 23 |
| Results Transaction .....                                     | 23 |
| Appendix E – Sample Order Request.....                        | 24 |
| Appendix F – Sample Response Failure .....                    | 30 |
| Appendix G – Sample Order Response Success.....               | 31 |
| Appendix H – Sample Status Transmittal .....                  | 32 |
| Appendix I – Sample Results Transmittal.....                  | 40 |

## ***Proprietary Statement***

This document contains references to software or related information constituting proprietary trade secrets which have been maintained in "unpublished" status under the copyright laws, and which are to be treated by all persons having access thereto in manner to preserve the status thereof as legally protected trade secrets. The prohibited uses of this document are reserved by ExamOne. Using or disclosing the information contained here may be expressly authorized in advance by the copyright owner. However, it is intended that all prospective rights under the copyright laws in the event of future "publication" of this work shall also be reserved; for which purpose only, the following is included in this notice, to wit, "COPYRIGHT (c) 2005 By ExamOne, Inc, ALL RIGHTS RESERVED".

## ***Document History***

| <b>Version</b> | <b>Date</b>         | <b>Author</b> | <b>Comments</b>                                                               |
|----------------|---------------------|---------------|-------------------------------------------------------------------------------|
| 1.0            | 4/25/05             | Unknown       | Original revamped to reflect new formatting and design.                       |
| 1.1            | 5/17/05             | T. Brunston   | Revised document created to serve as newer version of document.               |
| 1.2            | 5/31/05             | T. Brunston   | Re-tooling of existing document to include content.                           |
| 1.2.5          | 6/7/05              | T. Brunston   | Re-organized format to more logical structure.                                |
| 1.3            | 6/23/05             | T. Brunston   | Restructured content to fit need.                                             |
| 1.3.5          | 7/20/05             | T. Brunston   | Restructured and revised content with the help and input from Dianne Schuetz. |
| 1.4            | 8/2/05              | T. Brunston   | Restructured and revised content with the help and input from Carl Peterson.  |
| 1.4.5          | 8/10/05             | T. Brunston   | Restructured and revised content with input from Troy Hartman.                |
| 1.5            | 8/22/05             | T. Brunston   | Revised document with help and input from Carl Peterson and Cindy Vera.       |
| 1.6            | 8/31/05,<br>9/12/05 | T. Brunston   | Revised document with help from Cindy Vera and Brett Logwood.                 |
| 1.7            | 11/04/05            | T. Brunston   | Removed links and embedded files for data maps. Cindy V to review.            |
| 1.8            | 11/04/05            | C. Vera       | Accepted changes.                                                             |
| 1.8            | 02/20/06            | G. Bollianda  | Updated 1122 Status and Result Data Map.                                      |

## **Section I**

### ***Introduction***

This implementation guide is intended to provide clients with an overview of the business and implementation processes that support a client's transition to or within the ExamOne family of products and services.

The technical content provided in this document represents ExamOne's standard implementation offering. Requests to deviate from the methods outlined will be evaluated and an estimate of level of effort and associated costs will be provided to clients.

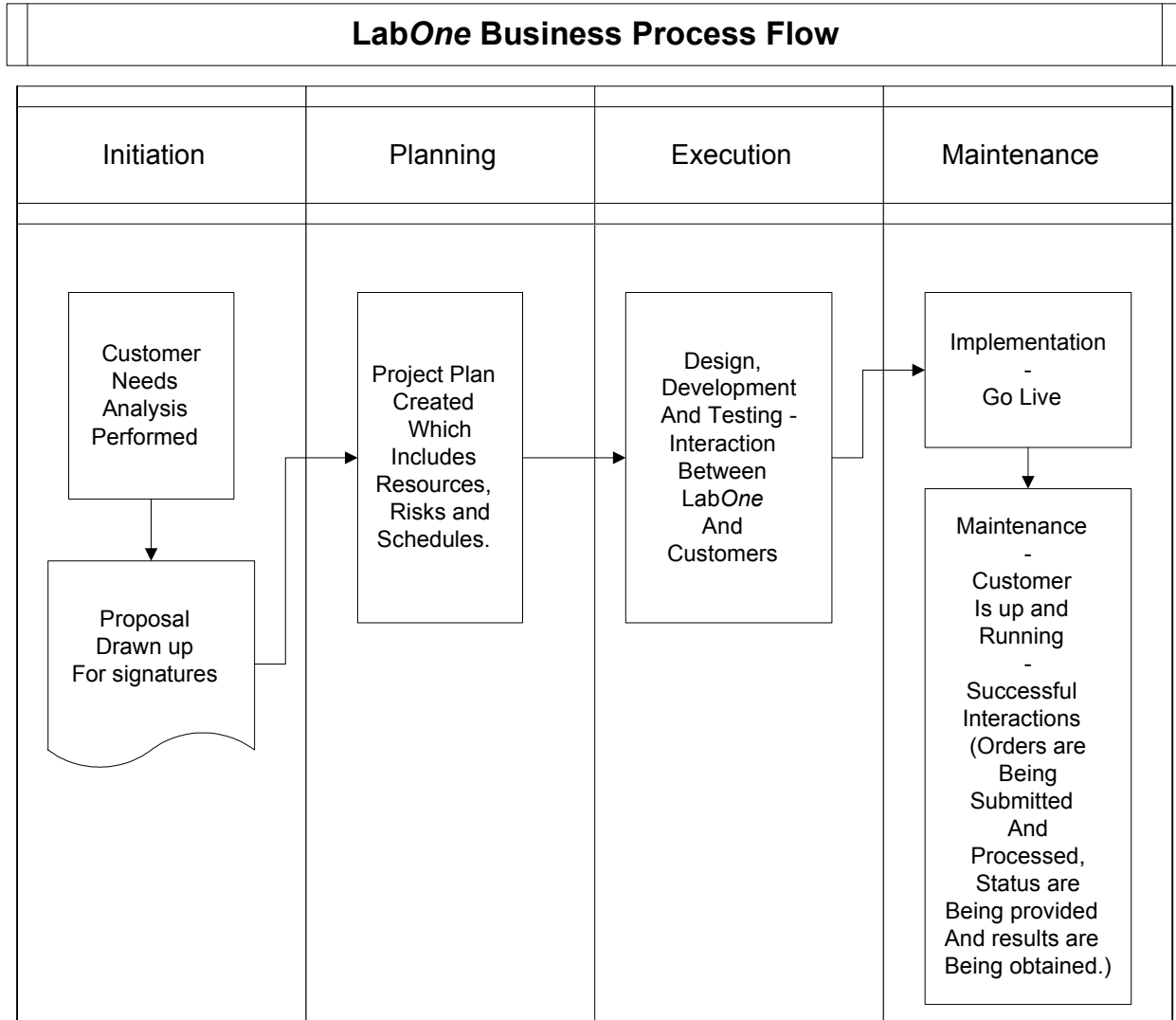
Section I provides an overview of the business process used to implement new clients, an overview of the ExamOne products and services as well as the types of interactions between ExamOne and its clients.

Section II provides an overview of the management of client interactions and the processes for implementing services.

Section III provides detailed information related to the transmission and technical processes used to support the implementation of services.

## Business Process Flow

The business process flow below provides a generalized explanation of activities from start to finish for implementing ExamOne’s products and services.



The process is designed with related and organized activities that work toward a common goal. The entire process works systematically towards a clear purpose to meet our client’s needs.

## **Products and Services**

There are various products and services that a client may have access to through ExamOne. Our CaseOne hub offers integrated services to clients and those services can be a single service, a few services or a varied mixture of services, depending on the client's needs.

ExamOne can also serve as the information point of client's interactions to and from external service providers. Our desire is to offer one-stop shopping to clients in the insurance industry and to provide the capability to process every requirement from one source. For instance, underwriters can place an order one time in one system which then distributes the underwriting requirements as opposed to having interfaces built with each service provider's system.

The following tables list the services accessible via CaseOne, including ExamOne providers and external service providers. ExamOne's service offerings are as follows:

| <b>Provider</b>                | <b>Name of Service</b>                                                                                                                                                                                                        |
|--------------------------------|-------------------------------------------------------------------------------------------------------------------------------------------------------------------------------------------------------------------------------|
| ExamOne                        | Attending Physician Statements<br>Case Management<br>Imaging<br>Inspections<br>Laboratory Testing and Related Services<br>LifePlus<br>Motor Vehicle Reports<br>Personal History Interviews<br>ScriptCheck<br>TeleUnderwriting |
| ExamOne                        | Paramedical Services<br>Imaging Solutions                                                                                                                                                                                     |
| <b>International Providers</b> | <b>Name of Service</b>                                                                                                                                                                                                        |
| ExamOne – Canada               | Attending Physician Statements<br>Paramedical Services                                                                                                                                                                        |

The external service providers and their service offerings are as follows.

| <b>Provider</b>                                       | <b>Name of Service</b>                                                       |
|-------------------------------------------------------|------------------------------------------------------------------------------|
| APPS                                                  | Paramedical services                                                         |
| EMSI<br>(Examination<br>Management<br>Services, Inc.) | Paramedical Services<br>Inspection Reports<br>Attending Physician Statements |
| First Financial                                       | Inspection Reports<br>Personal History Interviews                            |
| Portamedic<br>(Hooper Holmes)                         | Paramedical Services<br>Inspection Reports<br>Attending Physician Statements |
| IIS                                                   | Attending Physician Statements                                               |
| MAAS<br>(Mid-American<br>Agency Services, Inc.)       | Physicians Interview Line<br>TeleUnderwriting                                |
| MRS                                                   | Attending Physician Statements                                               |
| <b>International Providers</b>                        | <b>Name of Service</b>                                                       |
| Quality Underwriting<br>Services Ltd.                 | Paramedical Services                                                         |
| Hooper Holmes                                         | Paramedical Services                                                         |
| Medisys                                               | Paramedical Services                                                         |

## Section II

### ***Types of Interactions***

Client interaction is an integral part of the overall process beginning with sales and continuing through the initiation of new services being planned, designed, developed, tested, implemented and maintained for each client. The types of interactions that this implementation guide focuses on are the **orders**, **status** and **results** between the CaseOne hub and clients.

Our definition of an **order** is a request for service for a particular activity or group of activities from a client to a provider. Our definition of **status** is an update of an activity or activities from service providers. Our definition of **result** is the tangible underwriting requirement obtained by the service provider.

### ***Clarification of Interactions***

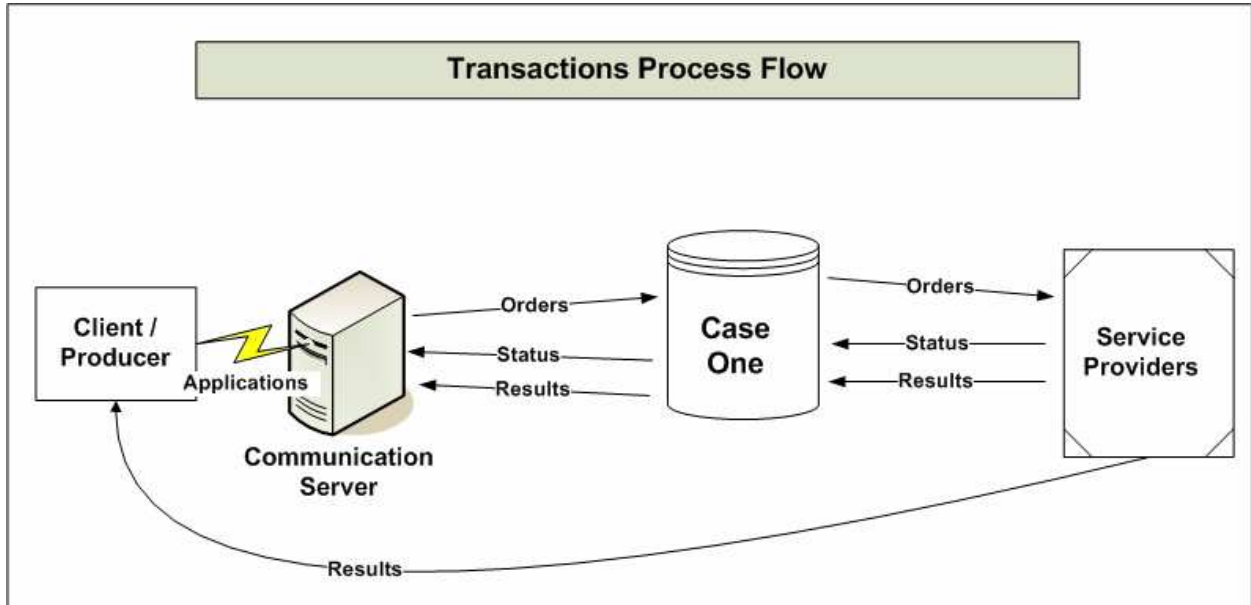
The following explanation provides details about the activities, between clients and ExamOne, of the interactions process flow. Interactions are described as mutual or reciprocated actions. Interactions between clients and ExamOne consist of the following:

- Client submission of orders (service requests)
- ExamOne returns acknowledgement of new orders
- ExamOne submits requests for services to internal and external service providers by routing all requests to appropriate providers, based on our client's underwriting rules
- ExamOne monitors service providers responses and captures status
- ExamOne provides clients with intermediate status updates
- Client reviews status
- ExamOne sends clients a final status when the service provider has fulfilled the request or completed their handling
- Client may receive results from ExamOne or directly from service providers

After a client has been fully integrated to CaseOne, order, status and result transactions can be optimized to meet our client's transmission schedule.

### ***Interactions Process Flows – Orders, Status and Results***

The graphic depicts the transactions between clients, CaseOne and service providers.



**Note:** Appendix G contains samples files of orders, status and results which show the ACORD version 2.10 TXLife Transactions used by ExamOne.client.

## Section III

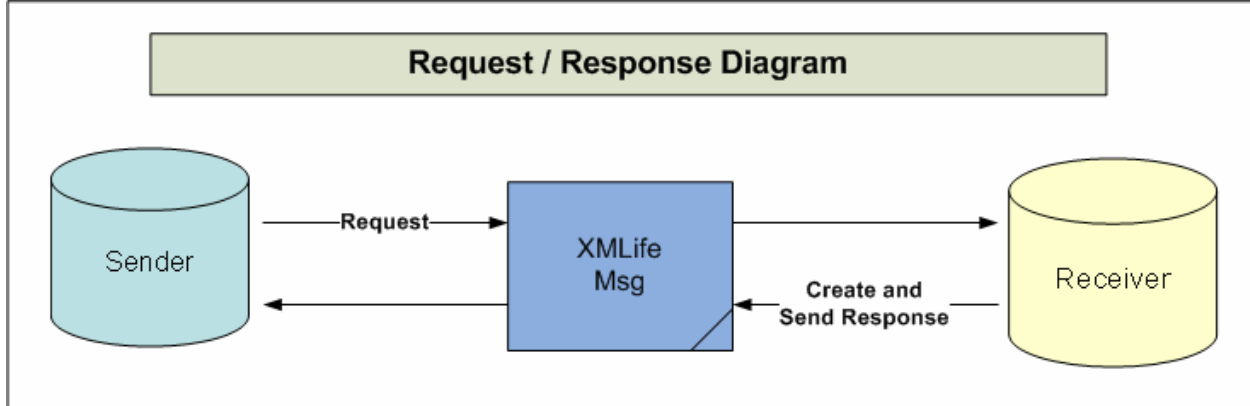
### *Types of Transactions*

ExamOne supports transactions for orders, confirmations, intermediate and final status, results and responses. The transactions facilitate the electronic exchange of data between ExamOne and clients, ExamOne and service providers (both internal and external) and ExamOne internal departments. The transactions are based on the ACORD TXLife version 2.10 standard and include the 121 General Requirements Order Request and 1122 General Requirements Status/Results Transmittal.

An ACORD transaction may be represented in two ways.

1. Request Message Only – The transaction consists of a single TXLife message (file), which is sent from one Party to another. The file represents a unit of work, such as an order for a service or transmittal of status or results for a service.
2. Request and Response Message – The transaction consist of two TXLife messages (files): A request message, as described above, and another TXLife Response message (file) which is sent back to the requester after receipt of the request message. The response message confirms receipt of the request message.

ExamOne recommends the Request/Response transaction for orders, status and results, because the sender is able to confirm that a TXLife Request message was received successfully.



#### TXLife

The TXLife object serves as an envelope (“wrapper”) which may contain one or more messages. A message contains two sections: one for user authentication and one for message content. Each message (TXlifeRequest or TXLifeResponse) contains a unique transaction identification number used to tie a response message back to a request message.

### TXLife Request Message

1. UserAuthRequest – Contains identifying information about the requester. Each TXLife Request Message will contain a single UserAuthRequest object.
2. TXLifeRequest – Contains information identifying the request message of the transaction. Each TXLife Request Message represents an order for services, or status or results pertaining to a particular order. Each TXLife Request will contain one or more TXLifeRequest objects.

### TXLife Response Message

1. UserAuthResponse – Echoes back the information received in a TXLifeRequest message and confirms that the authentication was successful.
2. TXLifeResponse – Echoes back the information received in a TXLifeRequest message and confirms that the Request message was successfully received.
3. Refer to the Response Data Map for the success and failure response message details.

### OLife

An OLife object contains the “payload” of the message. In other words, it represents the information necessary to fulfill the purpose of the transaction (order, status or results).

The following objects may be included in an OLife Object.

- SourceInfo – Identifies the source which generated the message
- Holding – Represents the policy that has been applied for or existing insurance
  - Policy – Data related to a policy
    - Life – Represents a Life Insurance policy
      - Coverage – The coverage on a life insurance policy
        - LifeParticipant – Defines the role of a party on the policy.
      - RequirementInfo – Data related to the requirements/services which are being requested
      - Attachment – Data related to the requirement. Could be notes related to a particular service being ordered or an encoded file which represents a service result
    - ApplicationInfo – Information related to Life Insurance application services being requested
- Party – A person or organization
- Relation – Defines the relationship between a Party and another Party or a Holding
- FormInstance – Typically represents a question on a form that is not represented elsewhere in the ACORD model

Also included in this section are examples of the various types of transactions that ExamOne uses. For more general information on the ACORD standard, please refer to the ACORD web site ([www.acord.org](http://www.acord.org)). The ExamOne sales representative may address specific client questions or concerns.

## Order Transactions

ExamOne supports the ACORD version 2.10 TXLife 121 General Requirements Order Request transaction. This transaction is used to receive orders from a client or service provider and send orders to a non-ExamOne service provider. Several data structures within the 121 TXLife request are required for ExamOne to process the order request successfully.

The XML diagram located in Appendix A – Hierarchy Diagrams provides a visual of the file format for transactions.

## Request

An order request file from a client or service provider to ExamOne should consist of the following:

1. A single TXLife object, representing the transaction file.
2. A single UserAuthRequest object, representing information about the sender.
3. One or more TXLifeRequest objects, each representing an order for one or more requirements.
4. A single OLife object, within each TXLifeRequest, representing demographic and other supporting data necessary to fulfill the order.
5. A single SourceInfo object within each OLife, representing the ExamOne system generating the order transaction.
6. At least one Holding within each OLife, to define the policy the proposed insured is applying for. Additional Holdings may need to be defined to model existing insurance.
  - One or more RequirementInfo objects which define the requirements being ordered (examples include: APS, Tele-interview, Inspection Report, Paramedical requirements, etc.). Note that ExamOne often diagnoses requirements based on rules agreed upon with the client.
7. The following Party objects will appear within each OLife object.
  - Proposed Insured/Applicant (AppliesToPartyID), representing the person whom the requirement applies to.
  - Fulfiller (FulfillerPartyID) (party fulfilling the requirement).
  - Requester (RequesterPartyID) (party submitting the order).
  - Carrier (CarrierPartyID) - The insurance company for whom the policy applies to.
8. Relation Objects within each OLife object. These objects define the Party to Party, Party to Holding or a Holding to Holding relationships. See Appendix B Relation Objects for more information.

Other Parties that may be supplied in the TXLife Order file depending upon whether they apply to the services being ordered.

- Requester Contact (RequesterContactPartyID) (party to contact with questions concerning the order).
- Doctor - Physician of the requirement, typically for APS requests
- Employer of the proposed insured
- Beneficiaries
- Owners
- Payers
- Agent
- Agency

Each order must be uniquely identified by the sender of the 121 Order transaction. This is accomplished by populating the TrackingID property in the ApplicationInfo object. If the policy number of the case is to be used as the unique tracking id for the order, then the client must populate both the PolNumber and TrackingID properties with the assigned policy number value.

## Response

ExamOne has the ability to generate a file containing a single TXLife Response object related to a TXLifeRequest object received in an ACORD version 2.10 TXLife 121 General Requirements Order Request file. This is configurable by client.

An order response message file from ExamOne will consist of the following:

1. A single TXLife object, representing the message file.
2. A single UserAuthResponse object, which indicates whether the user information in the 121 TXLifeRequest message file was recognized by ExamOne.
3. A single TXLifeResponse object, which indicates whether ExamOne was able to successfully process a particular TXLifeRequest.
4. A single Attachment object may be included to represent the original TXLifeRequest (encoded in Base64). This is configurable by client.

If ExamOne fails to process a TXLifeRequest message, the TXLifeResponse file will contain a ResultInfo object containing information about why the request failed.

## **Status Transactions**

ExamOne supports the ACORD version 2.10 TXLife 1122 General Requirements Status / Results Transmittal. This transaction is used to transmit requirement status to a client. Each status request message file contains one or more status events for one or more requirements for a single applicant.

The XML diagram located in Appendix A – Hierarchy Diagrams provides a visual of the file format for transactions.

## **Request**

A status request file from ExamOne will typically contain the same information received in the order, but with the addition of the following:

1. One or more StatusEvent objects within each RequirementInfo object, representing a particular activity that occurred on the requirement.

An id is generated by ExamOne to uniquely identify the order which status is being reported on. This is necessary because the value received in the TrackingID property in the original order transaction may not be unique across ExamOne's clients. ExamOne's unique order id is represented by the ProviderOrderNum property appearing within each RequirementInfo object. The value of the ProviderOrderNum will not vary across requirements for a particular order.

Intermediate Status is represented by status events delivered prior to the order completion or cancellation. Final Status is represented by status events delivered at the completion/cancellation of the order. A status transmittal transaction may contain both intermediate and final status in the same (TXLifeRequest) message, if both types of events have occurred since status was last transmitted by ExamOne.

Only new status events are transmitted in status request messages related to a particular order.

Refer to Appendix H – Sample Status Transmittal

## **Response**

ExamOne has the ability to process a file containing one to many responses related to requests generated by ExamOne.

A status response file sent to ExamOne will need to contain the following:

1. A single TXLife object, representing the message file.
2. A single UserAuthResponse object, which indicates whether the user information in the 121 TXLifeRequest message file was recognized by the client.
3. One to many TXLifeResponse objects, which indicate whether the client was able to successfully process a particular TXLifeRequest
4. A single Attachment object may be included to represent the original TXLifeRequest (encoded in Base64). This is configurable by client.

If ExamOne receives a response indicating the client was unable to process a status or results transmittal, ExamOne will notify the client per a trading partner agreement.

## **Results Transactions**

ExamOne supports the ACORD version 2.10 TXLife 1122 General Requirements Status / Results Transmittal. .

### **Request**

A results request file from ExamOne will typically contain the same information received in the order, but with the addition of the following:

1. One or more Attachment objects may appear within each RequirementInfo object. Each Attachment object will contain an encoded results file or a reference to the location of a results file being sent separately to a client.

### **Response**

ExamOne has the ability to process a file containing one to many responses related to requests generated by ExamOne.

A results response file sent to ExamOne will need to contain the following:

5. A single TXLife object, representing the message file.
6. A single UserAuthResponse object, which indicates whether the user information in the 121 TXLifeRequest message file was recognized by the client.
7. One to many TXLifeResponse objects, which indicate whether the client was able to successfully process a particular TXLifeRequest
8. A single Attachment object may be included to represent the original TXLifeRequest (encoded in Base64). This is configurable by client.

If ExamOne receives a response indicating the client was unable to process a status or results transmittal, ExamOne will notify the client per a trading partner agreement.

## ***Overview of Transmission Options***

ExamOne offers a variety of file transfer methods, offering data exchange through dialup modem, the Internet, via VPN, or Frame relay circuits. Following is a list of our communication methods.

### **Connectivity Options:**

- **Internet:** ExamOne has a high availability connection to the public Internet that can be used for most file transfer needs.
- **Modem:** For low volume file transfers, we still support dial in and dial out via asynchronous modems.
- **VPN Circuit:** ExamOne has the ability to establish a VPN circuit over the Internet where additional security is mandated. We consult with the client's network/firewall group in the initial setup, configuration, and support of the dedicated connection.
- **Frame Relay:** ExamOne can establish a Frame Relay circuit between our companies in cases where it is not feasible or desirable to utilize the Internet. ExamOne consults with the client's network/firewall group in the initial setup, configuration, and support of the dedicated connection.

### **File Transfer Options:**

- **ExamOne NET:** This windows-based communication package can be used to transfer data to and from ExamOne. This application can be configured to move data through the Internet over a secure socket or via a dialup modem. Encryption and decryption of the data files is seamless and automatic. The software can be invoked from an external scheduler or it can be left running and will periodically connect to ExamOne to transfer files. Communication timelines are configurable from within the application.
- **FTP Server:** ExamOne hosts an FTP server that can be used to transfer files. Using this server the client can both upload orders and receive result files. ExamOne supports PGP for encryption of files that are transferred via our server. PGP versions currently being used and supported are PGP 8.5, PGP 6.5.2, and GPG 1.0.6. The preferred PGP version is 8.5.
- **FTP Client:** ExamOne is capable of utilizing the client's FTP server to transfer files. We can pull orders from the clients FTP server as well as send results. ExamOne supports PGP for encryption of files that are transferred. PGP versions are the same as above.
- **FTPS Server:** ExamOne hosts an FTPS server that can be used to transfer files. Using this server the client can both upload orders and receive result files.

**File Transfer Options, Continued:**

- FTPS Client: ExamOne is capable of utilizing the client's FTPS server to transfer files. We can pull orders from the clients FTPS as well as send results.
- SFTP Client: ExamOne is capable of utilizing the client's SFTP server to transfer files. We can pull orders from the clients SFTP as well as send results.
- FTP Client & Server: ExamOne's FTP transmission preference would be a combination of the client and server methods. Ideally the methodology would be to have the client send orders to the ExamOne FTP server and for ExamOne to push results to the client's server. This avoids any polling by allowing the creator of the data to always push it to the recipient.
- Dial-in Modem: ExamOne hosts a dial-in modem pool that clients may access to upload and download files. ExamOne supports file transfers via Kermit, Xmodem, and Zmodem protocols.
- Dial-out Modem: ExamOne can dial-out to a client's modem pool to upload and download files. ExamOne supports file transfers via Kermit, Xmodem, and Zmodem protocols.

**NOTE:** All communication efforts will comply with the ExamOne IT Security Policies and Procedures that address the protection sensitive information being transmitted to and from ExamOne. These procedures cover privacy rules, security, operations and communications management. For more information about the ExamOne IT Security Policies and Procedures, please contact the representative that provided access to this document.

## Section IV

### *Frequently Asked Questions (FAQ's)*

1. Which version of the ACORD standard is supported by ExamOne?

**Answer:** ExamOne supports ACORD version 2.10.

2. Is user authentication preferred?

**Answer:** ExamOne prefers to receive user authentication.

3. Will status events be logged in chronological order?

**Answer:** All status events are in ascending order; this does not apply to results.

4. Is a status response file needed?

**Answer.** Preferably yes. If the client can support it, the ACORD response file is the 1122 response.

5. Is a 121 response an appropriate failure message format?

**Answer:** Error content will be embedded in the response file.

6. Can multiple requirements be submitted with one result?

**Answer:** The 1122 file may contain multiple requirements referencing same result. For example, two requirements collecting or analyzing blood and urine would both reference the same lab result report.

7. Can a single requirement be submitted with multiple results?

**Answer:** If services are ordered, an 1122 result will be returned because each document type will have its own file. ExamOne will advise the service provider to send one document type/image file per index file. For example, one requirement for a combo Paramed, Urine & Blood collection, and EKG may return multiple result transactions.

8. How are APS authorizations submitted?

**Answer:** ExamOne is able to support and retrieve image files that contain physician's authorized signatures via the ACORD version 2.10 standard 121 data transmission.

9. What date does ExamOne send with the status message?

**Answer:** ExamOne will send the provider status date.

10. How does ExamOne handle sensitive lab results?

**Answer:** These results are mailed back to clients.

11. How long will paperwork be stored at ExamOne?

**Answer:** ExamOne's standard is to store documentation for 30 days, but not longer than 90 days. Paperwork can be returned to the client at the client's cost.

## ***Glossary of Terms***

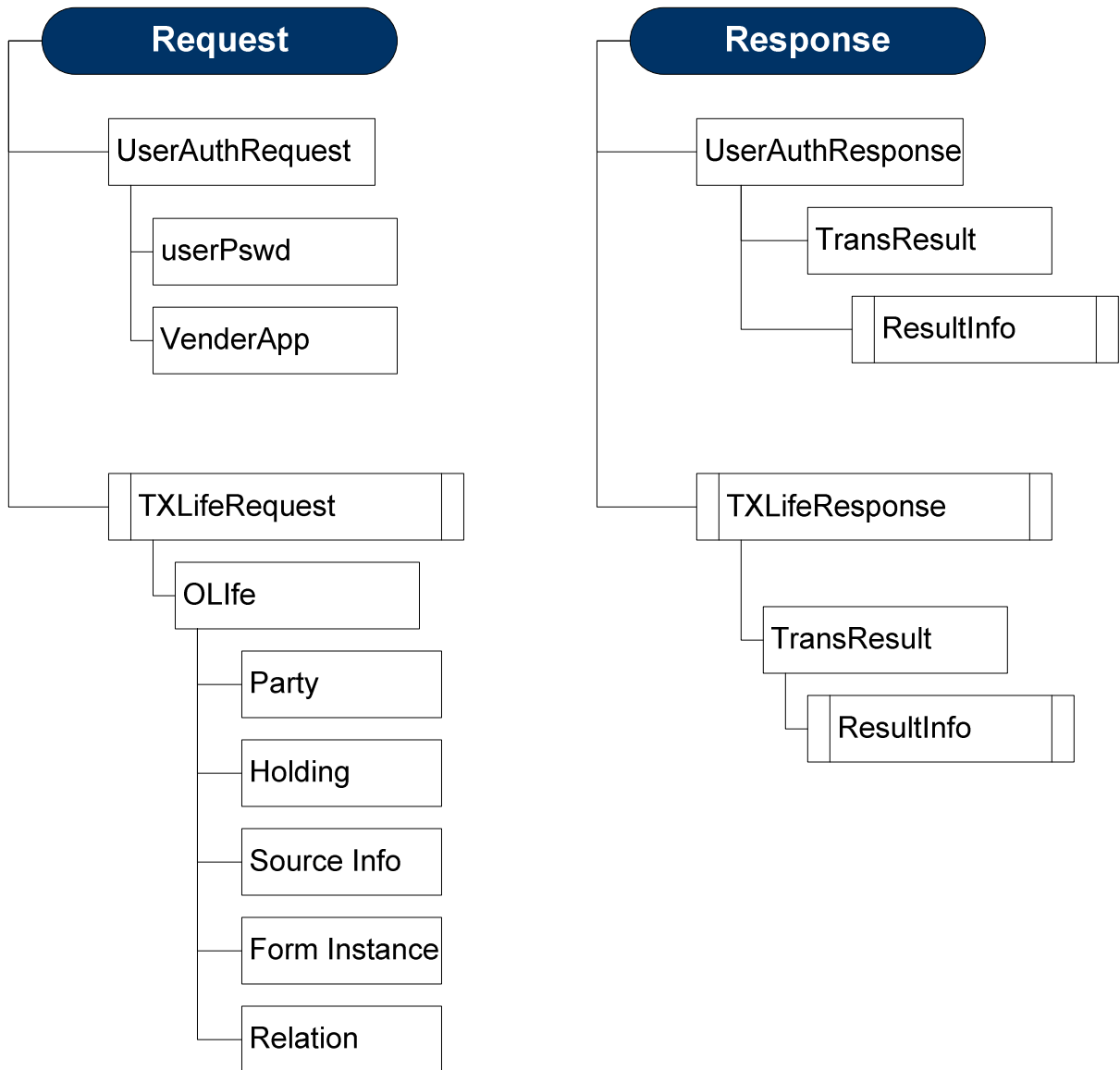
The following table serves as a glossary that provides terms, acronyms and their definitions used in this guide.

| <b>Term</b>      | <b>Definition</b>                                                                                                                                                            |
|------------------|------------------------------------------------------------------------------------------------------------------------------------------------------------------------------|
| ACORD            | Assoc for Cooperative Operations Research and Development.                                                                                                                   |
| APS              | Attending Physician Statement.                                                                                                                                               |
| CaseOne          | ExamOne's product to handle client orders, status and results.                                                                                                               |
| MVR              | Motor Vehicle Report.                                                                                                                                                        |
| OLife            | The ACORD XML object which provides the information necessary to fulfill the purpose of the transaction (order, status or results).                                          |
| TXLife           | The ACORD XML object which serves as an envelope containing one or more TXLifeRequest or TXLifeResponse messages.                                                            |
| UserAuthRequest  | The ACORD XML object that contains user authentication information for an ACORD request message.                                                                             |
| UserAuthResponse | The ACORD XML object which indicates whether the information received in a UserAuthRequest object was processed successfully by the receiver.                                |
| TXLifeRequest    | The ACORD XML object which represents an order for a single proposed insured or status or results related to a previous order.                                               |
| TXLifeResponse   | The ACORD XML object which indicates whether the information received in a TXLifeRequest object was received successfully.                                                   |
| XMIT             | A program specifically written to transmit any kind of real-time data to a host network. It can send data at a fixed rate, or it can send it just as fast as it is arriving. |

## Appendices

### Appendix A – Hierarchy Diagrams

The following hierarchy diagram provides a visual view of the XML objects for a request and response using the ACORD standards. This diagram displays a high-level overview for these two transactions. To view all levels of the ACORD standards diagram, please visit the ACORD web site at ([www.acord.org](http://www.acord.org)).



## Appendix B – Relation Objects

Relation objects are used in the ACORD model to define how Top-Level objects are related to other Top-Level objects. The most frequently related Top-Level objects are Parties and Holdings.

### Party to Holding:

Example:

```
<Relation id="Relation_1" OriginatingObjectID="Holding_1" RelatedObjectID="Party_1">  
  <OriginatingObjectType tc="4">Holding</OriginatingObjectType>  
  <RelatedObjectType tc="6">Party</RelatedObjectType>  
  <RelationRoleCode tc="32">Insured</RelationRoleCode>  
</Relation>
```

In the example above, the OriginatingObjectID points to a Holding representing the policy being applied for and the RelatedObjectID points to a Party representing the proposed insured. The Relation object defines Party\_1 as the proposed insured for the policy being applied for.

### Party to Party:

Example:

```
<Relation id="Relation_2" OriginatingObjectID="Party_1" RelatedObjectID="Party_4">  
  <OriginatingObjectType tc="6">Party</OriginatingObjectType>  
  <RelatedObjectType tc="6">Party</RelatedObjectType>  
  <RelationRoleCode tc="7">Employer</RelationRoleCode>  
</Relation>
```

In the example above, the OriginatingObjectID points to a Party representing the proposed insured and the RelatedObjectID points to a Party representing the employer. The Relation object defines Party\_4 and the employer to the proposed insured.

### Holding to Holding:

Example:

```
<Relation id="Relation_6" OriginatingObjectID="Holding_1" RelatedObjectID="Holding_2">  
  <OriginatingObjectType tc="4">Holding</OriginatingObjectType>  
  <RelatedObjectType tc="6">Party</RelatedObjectType>  
  <RelationRoleCode tc="64">Replaced By</RelationRoleCode>  
</Relation>
```

In the example above, the OriginatingObjectID points to a Holding representing the policy being applied for and the RelatedObjectID points to a Holding representing an existing policy owned by the proposed insured. The Relation object links the existing policy to the proposed policy and defines Holding\_2 as an existing policy being replaced by the proposed policy.

## ***Appendix C – Data Maps***

The icon below offers a link to the embedded Excel workbook that provides the ACORD Data Maps. The workbook contains corresponding worksheets for ExamOne transactions for orders, status, results and response.



LabOne ACORD 2.10  
Order Data Map.xls



LabOne ACORD 2.10  
Order Response Data



LabOne ACORD 2.10  
Status Data Map.xls



LabOne ACORD 2.10  
Result Data Map.xls

## ***Appendix D – Sample Order Files***

Data transmission between ExamOne and clients need to follow the ACORD standard general requirements for transmitting data using XML format which are 121 and 1122 data files. The transmissions include the following:

### **Order Transaction**

- 121 Order Request File - Client to ExamOne
- 121 Order Response File - ExamOne to Client

### **Status Transaction**

- 1122 Status Request File – ExamOne to Client
- 1122 Status Request File – Client to ExamOne

### **Results Transaction**

- 1122 Results Request File – ExamOne to Client
- 1122 Results Request File – Client to ExamOne

The following appendices (E – I) contain sample XML formatted files for the following data transmissions:

- Appendix E – Sample Order Request
- Appendix F – Sample Order Response Failure
- Appendix G – Sample Order Response Success
- Appendix H – Sample Status Transmittal
- Appendix I – Sample Result Transmittal

## Appendix E – Sample Order Request

### Sample Order Files – ACORD 121 Requirements Order Request Message file

```

<?xml version="1.0" encoding="UTF-8"?>
<TXLife xmlns="http://ACORD.org/Standards/Life/2" xmlns:xsi="http://www.w3.org/2001/XMLSchema-instance"
xsi:schemaLocation="http://ACORD.org/Standards/Life/2 TXLife2.10.00enum.xsd">
  <UserAuthRequest>
    <UserLoginName>Carrier Name</UserLoginName>
    <UserPswd>
      <CryptType>NONE</CryptType>
      <Pswd/>
    </UserPswd>
    <VendorApp>
      <VendorName VendorCode="112">Insurance Company Life</VendorName>
      <AppName>insert name of the application that generates the orders, if you want
    </AppName>
      <AppVer>insert name of the application that generates the orders, if you want
    </AppVer>
    </VendorApp>
  </UserAuthRequest>
  <TXLifeRequest>
    <TransRefGUID>795E609AF1134DEE9E3A2FD129CB07BD</TransRefGUID>
    <TransType tc="121">General Requirements Order Request</TransType>
    <TransExeDate>2004-03-01</TransExeDate>
    <TransExeTime>03:01:37</TransExeTime>
    <TransMode tc="2">Original</TransMode>
    <NoResponseOK tc="0">False</NoResponseOK>
    <TestIndicator tc="1">True</TestIndicator>
    <OLife>
      <SourceInfo>
        <SourceInfoName>ExamOne's application source code</SourceInfoName>
      </SourceInfo>
      <Holding id="Holding_1">
        <HoldingTypeCode tc="2">Policy</HoldingTypeCode>
        <HoldingForm tc="1">Individual</HoldingForm>
        <Policy CarrierPartyID="Party_2">
          <PolNumber>UH021549N</PolNumber>
          <LineOfBusiness tc="1">Life</LineOfBusiness>
          <ProductType tc="2">Term</ProductType>
          <ProductCode>17814</ProductCode>
          <PolicyStatus tc="12">Proposed</PolicyStatus>
          <Life>
            <FaceAmt>500000</FaceAmt>
            <Coverage id="Coverage_1">
              <IndicatorCode tc="1">Base</IndicatorCode>
              <LifeParticipant id="Participant_1" PartyID="Party_1">
                <LifeParticipantRoleCode tc="1">
Primary Insured</LifeParticipantRoleCode>
              </LifeParticipant>
              <LifeParticipant id="Participant_2" PartyID="Party_3">
                <LifeParticipantRoleCode tc="7">

```

Sample Order Request Continued on next page

**Sample Order Files – ACORD 121 Requirements Order Request Message file**

```
Beneficiary-Primary</LifeParticipantRoleCode>
  </LifeParticipant>
  </Coverage>
</Life>
<ApplicationInfo>
  <TrackingID>131347389999988776655</TrackingID>
  <ApplicationJurisdiction tc="17">IL</ApplicationJurisdiction>
  <PrefLanguage tc="4">Chinese</PrefLanguage>
</ApplicationInfo>
  <RequirementInfo id="Req_1" AppliesToPartyID="Party_1" RequesterPartyID="Party_2"
  FulfillerPartyID="Party_5" RequestorContactPartyID="Party_6">
    <ReqCode tc="139">Inspection Report</ReqCode>
    <RequirementDetails>notes related to this requirement
  </RequirementDetails>
    <RequestedDate>2004-03-01</RequestedDate>
    <RequirementAcctNum>Billing Code assinged by ExamOne
  </RequirementAcctNum>
  </RequirementInfo>
  <RequirementInfo id="Req_2" AppliesToPartyID="Party_1" RequesterPartyID="Party_2"
  FulfillerPartyID="Party_7" RequestorContactPartyID="Party_6">
    <ReqCode tc="11">Attending Physician Statement</ReqCode>
    <RequirementDetails>notes related to this requirement
  </RequirementDetails>
    <RequestedDate>2004-03-01</RequestedDate>
    <RequirementAcctNum>Billing Code assinged by ExamOne
  </RequirementAcctNum>
  <Attachment>
    <AttachmentData>c2QiPg0KCTxVc2VyQXV0aFJlcXVlc3Q+DQoJCTxVc2VyTG9naW50YW1lPkhcnRmb3JkTGlmZTwwVXNlckxvZ2luTmFtZT4NCgkJPfVzZXJQc3dkPg0KCQkJPENyeXB0VHlwZT5OT05FPC9D
  </AttachmentData>
    <AttachmentType tc="57">APS Authorization</AttachmentType>
    <MimeTypeTC tc="11">Image/Tiff</MimeTypeTC>
    <TransferEncodingTypeTC tc="4">base64</TransferEncodingTypeTC>
    <AttachmentLocation tc="1">Inline</AttachmentLocation>
  </Attachment>
  <OLifEEExtension VendorCode="38"
  ExtensionCode="PhysicianPartyID">Party_8</OLifEEExtension>
  <OLifEEExtension VendorCode="38"
  ExtensionCode="MedicalFacilityPartyID">Party_9</OLifEEExtension>
  </RequirementInfo>
  <RequirementInfo id="Req_3" AppliesToPartyID="Party_1" RequesterPartyID="Party_2"
  FulfillerPartyID="Party_10" RequestorContactPartyID="Party_6">
    <ReqCode tc="10">Medical Exam by Para</ReqCode>
    <RequirementDetails>Note related to this requirment</RequirementDetails>
    <RequestedDate>2004-03-01</RequestedDate>
    <RequirementAcctNum>Billing Code assinged by ExamOne
```

*Sample Order Request Continued on next page*

**Sample Order Files – ACORD 121 Requirements Order Request Message file**

```
</RequirementAcctNum>
  </RequirementInfo>
  </Policy>
  <Attachment>
    <AttachmentData>Language is Cantonese</AttachmentData>
    <AttachmentType tc="2">Comment</AttachmentType>
  </Attachment>
</Holding>
<Party id="Party_1">
  <PartyTypeCode tc="1">Person</PartyTypeCode>
  <GovtID>325667899</GovtID>
  <Person>
    <FirstName>John</FirstName>
    <MiddleName>M</MiddleName>
    <LastName>Alexander</LastName>
    <Prefix>Mr.</Prefix>
    <Suffix>Jr.</Suffix>
    <Occupation>Mechanic</Occupation>
    <MarStat tc="1">Married</MarStat>
    <Gender tc="1">M</Gender>
    <BirthDate>1971-04-15</BirthDate>
    <DriversLicenseNum>VA12443566-0021</DriversLicenseNum>
    <DriversLicenseState tc="55">VA</DriversLicenseState>
  </Person>
  <Address>
    <AddressTypeCode tc="1">Residence</AddressTypeCode>
    <Line1>300 Nicks St</Line1>
    <Line2>Apt 3A</Line2>
    <City>Allentown</City>
    <AddressStateTC tc="37">NY</AddressStateTC>
    <Zip>12232</Zip>
  </Address>
  <Phone>
    <PhoneTypeCode tc="1">Residence</PhoneTypeCode>
    <AreaCode>725</AreaCode>
    <DialNumber>9065543</DialNumber>
  </Phone>
  <Phone>
    <PhoneTypeCode tc="2">Business</PhoneTypeCode>
    <AreaCode>725</AreaCode>
    <DialNumber>4432121</DialNumber>
  </Phone>
  <Phone>
    <PhoneTypeCode tc="12">Mobile</PhoneTypeCode>
    <AreaCode>725</AreaCode>
    <DialNumber>4432122</DialNumber>
  </Phone>
  <EmailAddress>
    <AddrLine>applicant@isp.com</AddrLine>
  </EmailAddress>
```

*Sample Order Request Continued on next page*

**Sample Order Files – ACORD 121 Requirements Order Request Message file**

```
</Party>
<Party id="Party_2">
  <PartyTypeCode tc="2">Organization</PartyTypeCode>
  <FullName>Carrier Name</FullName>
  <Organization>
    <OrgForm tc="23">Corporation</OrgForm>
    <ACORDVendorCode>112</ACORDVendorCode>
  </Organization>
</Party>
<Party id="Party_3">
  <PartyTypeCode tc="1">Person</PartyTypeCode>
  <Person>
    <FirstName>Anne</FirstName>
    <MiddleName>J</MiddleName>
    <LastName>Alexander</LastName>
  </Person>
  <Address>
    <AddressTypeCode tc="1">Residence</AddressTypeCode>
    <Line1>300 Nicks St</Line1>
    <Line2>Apt 3A</Line2>
    <City>Allentown</City>
    <AddressStateTC tc="37">NY</AddressStateTC>
    <Zip>12232</Zip>
  </Address>
  <Phone>
    <PhoneTypeCode tc="1">Residence</PhoneTypeCode>
    <AreaCode>725</AreaCode>
    <DialNumber>9065543</DialNumber>
  </Phone>
</Party>
<Party id="Party_4">
  <PartyTypeCode tc="2">Organization</PartyTypeCode>
  <FullName>Discount Auto Repair</FullName>
  <Organization>
    <OrgForm tc="23">Corporation</OrgForm>
  </Organization>
  <Address>
    <AddressTypeCode tc="2">Business</AddressTypeCode>
    <Line1>300 Nicks St</Line1>
    <City>Allentown</City>
    <AddressStateTC tc="37">NY</AddressStateTC>
    <Zip>12232</Zip>
  </Address>
  <Phone>
    <PhoneTypeCode tc="2">Business</PhoneTypeCode>
    <AreaCode>725</AreaCode>
    <DialNumber>1913346</DialNumber>
    <Ext>2046</Ext>
  </Phone>
</Party>
```

*Sample Order Request Continued on next page*

**Sample Order Files – ACORD 121 Requirements Order Request Message file**

```
</Party>
<Party id="Party_5">
  <PartyTypeCode tc="2">Organization</PartyTypeCode>
  <FullName>Intellisys</FullName>
  <Organization>
    <OrgForm tc="23">Corporation</OrgForm>
    <OrgCode>SBSI</OrgCode>
    <ACORDVendorCode>120</ACORDVendorCode>
  </Organization>
</Party>
<Party id="Party_6">
  <PartyTypeCode tc="1">Person</PartyTypeCode>
  <FullName>Kim Wiley</FullName>
  <Person/>
  <Phone>
    <PhoneTypeCode tc="2">Business</PhoneTypeCode>
    <AreaCode>725</AreaCode>
    <DialNumber>9065543</DialNumber>
    <Ext>1985</Ext>
  </Phone>
  <Phone>
    <PhoneTypeCode tc="4">Business Fax</PhoneTypeCode>
    <AreaCode>725</AreaCode>
    <DialNumber>9065548</DialNumber>
  </Phone>
  <EmailAddress>
    <AddrLine>underwriter@Carrier Name.com</AddrLine>
  </EmailAddress>
</Party>
<Party id="Party_7">
  <PartyTypeCode tc="2">Organization</PartyTypeCode>
  <FullName>Intellisys</FullName>
  <Organization>
    <OrgForm tc="23">Corporation</OrgForm>
    <OrgCode>SBSIM4</OrgCode>
    <ACORDVendorCode>120</ACORDVendorCode>
  </Organization>
</Party>
<Party id="Party_8">
  <PartyTypeCode tc="1">Person</PartyTypeCode>
  <Person>
    <FirstName>Charles</FirstName>
    <MiddleName>G</MiddleName>
    <LastName>Todd</LastName>
  </Person>
```

*Sample Order Request Continued on next page*

**Sample Order Files – ACORD 121 Requirements Order Request Message file**

```
<Address>
  <AddressTypeCode tc="2">Business</AddressTypeCode>
  <Line1>1548 Halsey St</Line1>
  <Line2>Suite 385</Line2>
  <City>Allentown</City>
  <AddressStateTC tc="37">NY</AddressStateTC>
  <Zip>12232</Zip>
</Address>
<Phone>
  <PhoneTypeCode tc="2">Business</PhoneTypeCode>
  <AreaCode>725</AreaCode>
  <DialNumber>4432125</DialNumber>
</Phone>
</Party>
<Party id="Party_9">
  <PartyTypeCode tc="2">Organization</PartyTypeCode>
  <FullName>ABC Medical Clinic</FullName>
  <Organization>
    <OrgForm tc="23">Corporation</OrgForm>
  </Organization>
  <Address>
    <AddressTypeCode tc="2">Business</AddressTypeCode>
    <Line1>157 Brooklyn Cir</Line1>
    <Line2>Suite 102</Line2>
    <City>Austin</City>
    <AddressStateTC tc="37">NY</AddressStateTC>
    <Zip>12232</Zip>
  </Address>
  <Phone>
    <PhoneTypeCode tc="2">Business</PhoneTypeCode>
    <AreaCode>725</AreaCode>
    <DialNumber>4445875</DialNumber>
  </Phone>
</Party>
<Party id="Party_10">
  <PartyTypeCode tc="2">Organization</PartyTypeCode>
  <FullName>ExamOne</FullName>
  <Organization>
    <OrgForm tc="23">Corporation</OrgForm>
    <OrgCode>EXAM1</OrgCode>
    <ACORDVendorCode>119</ACORDVendorCode>
  </Organization>
</Party>
<Relation id="Relation_1" OriginatingObjectID="Holding_1" RelatedObjectID="Party_1">
  <OriginatingObjectType tc="4">Holding</OriginatingObjectType>
  <RelatedObjectType tc="6">Party</RelatedObjectType>
  <RelationRoleCode tc="32">Insured</RelationRoleCode>
</Relation>
<Relation id="Relation_2" OriginatingObjectID="Party_1" RelatedObjectID="Party_4">
  <OriginatingObjectType tc="6">Party</OriginatingObjectType>
  <RelatedObjectType tc="6">Party</RelatedObjectType>
  <RelationRoleCode tc="7">Employer</RelationRoleCode>
</Relation>
</OLife>
</TXLifeRequest>
</TXLife>
```

## Appendix F – Sample Response Failure

### Sample Order Files – ACORD Requirements Order Response Message file

```
<?xml version="1.0" encoding="UTF-8"?>
<TXLife xmlns="http://ACORD.org/Standards/Life/2" xmlns:n="http://ACORD.org/Standards/Life/2"
xmlns:xsi="http://www.w3.org/2001/XMLSchema-instance" xsi:schemaLocation="http://ACORD.org/Standards/Life/2
TXLife2.10.00enum.xsd">
  <UserAuthResponse>
    <TransResult>
      <ResultCode tc="1">Success</ResultCode>
    </TransResult>
  </UserAuthResponse>
  <TXLifeResponse>
    <TransRefGUID>NB3899E2_1A45_8179_5DA1_29D908F7BA31</TransRefGUID>
    <TransType tc="121">General Requirement Order Request</TransType>
    <TransExeDate>2005-07-06</TransExeDate>
    <TransExeTime>15:57:13</TransExeTime>
    <TransMode tc="2">Original</TransMode>
    <TransResult>
      <ResultCode tc="5">Failure</ResultCode>
      <ResultInfo>
        <ResultInfoCode tc="100">General Data Error</ResultInfoCode>
        <ResultInfoDesc>[eX_ACORD_210_To_XMLOne_ORD] Unable to unmarshal Blob attribute data into
Acord ETD.line 1: expecting &lt;{http://ACORD.org/Standards/Life/2}TXLife&gt;, found &apos;&lt;TXLife
Version=&quot;2.10.00&quot;&gt;&gt;&apos;</ResultInfoDesc>
      </ResultInfo>
      <OLifEEExtension ExtensionCode="InvalidFile" VendorCode="38"> base 64 encoded version of original
order resides here </OLifEEExtension>
    </TransResult>
  </TXLifeResponse>
</TXLife>
```

## Appendix G – Sample Order Response Success

### Sample Order Files – ACORD Requirements Order Response Message file

```
<?xml version="1.0" encoding="UTF-8"?>
<TXLife xmlns="http://ACORD.org/Standards/Life/2" xmlns:n="http://ACORD.org/Standards/Life/2"
xmlns:xsi="http://www.w3.org/2001/XMLSchema-instance" xsi:schemaLocation="http://ACORD.org/Standards/Life/2
TXLife2.10.00enum.xsd">
  <UserAuthResponse>
    <TransResult>
      <ResultCode tc="1">Success</ResultCode>
    </TransResult>
  </UserAuthResponse>
  <TXLifeResponse>
    <TransRefGUID>RA24AE9B_E000_A7E6_2B6F_A2053BF24974</TransRefGUID>
    <TransType tc="121">General Requirement Order Request</TransType>
    <TransExeDate>2005-07-06</TransExeDate>
    <TransExeTime>15:56:12</TransExeTime>
    <TransMode tc="2">Original</TransMode>
    <TransResult>
      <ResultCode tc="1">Success</ResultCode>
      <OLifEExtension ExtensionCode="ValidFile" VendorCode="38"> base 64 encoded version of original
order resides here</OLifEExtension>
    </TransResult>
  </TXLifeResponse>
</TXLife>
```

## Appendix H – Sample Status Transmittal

### Sample Status Files – ACORD 1122 Requirements Status Request Message file

```
<?xml version="1.0" encoding="UTF-8" standalone="no"?>
<TXLife xmlns="http://ACORD.org/Standards/Life/2" xmlns:xsi="http://www.w3.org/2001/XMLSchema-instance"
xsi:schemaLocation="http://ACORD.org/Standards/Life/2 TXLife2.10.00enum.xsd">
  <UserAuthRequest>
    <UserLoginName>ExamOne</UserLoginName>
    <UserPswd>
      <CryptType>NONE</CryptType>
      <Pswd/>
    </UserPswd>
    <VendorApp>
      <VendorName VendorCode="38">ExamOne</VendorName>
      <AppName>CaseCentral</AppName>
      <AppVer>1.3</AppVer>
    </VendorApp>
  </UserAuthRequest>
  <TXLifeRequest>
    <TransRefGUID>L1_1542556</TransRefGUID>
    <TransType tc="1122">General Requirements Status/Results Transmittal</TransType>
    <TransExeDate>2004-03-15</TransExeDate>
    <TransExeTime>14:12:07</TransExeTime>
    <TransMode tc="2">Original</TransMode>
    <NoResponseOK tc="0">False</NoResponseOK>
    <TestIndicator tc="1">True</TestIndicator>
    <OLife>
      <SourceInfo>
        <SourceInfoName>CaseOne</SourceInfoName>
      </SourceInfo>
      <Holding id="Holding_1">
        <HoldingTypeCode tc="2">Policy</HoldingTypeCode>
        <HoldingForm tc="1">Individual</HoldingForm>
        <Policy>
          <PolNumber>UH021549N</PolNumber>
          <LineOfBusiness tc="1">Life</LineOfBusiness>
          <ProductType tc="2">Term</ProductType>
          <ProductCode>17814</ProductCode>
          <PolicyStatus tc="12">Proposed</PolicyStatus>
          <Life>
            <FaceAmt>500000</FaceAmt>
            <Coverage id="Coverage_1">
              <IndicatorCode tc="1">Base</IndicatorCode>
              <LifeParticipant id="Participant_1" PartyID="Party_1">
                <LifeParticipantRoleCode tc="1">Primary Insured
              </LifeParticipantRoleCode>
            </LifeParticipant>
              <LifeParticipant id="Participant_2" PartyID="Party_3">
                <LifeParticipantRoleCode tc="7">Beneficiary-Primary
              </LifeParticipantRoleCode>
            </LifeParticipant>
            </Coverage>
          </Life>
        </Policy>
      </Holding>
    </OLife>
  </TXLifeRequest>
</TXLife>
```

Sample Status Transmittal Continued on next page

**Sample Status Files – ACORD 1122 Requirements Status Request Message file**

```
<ApplicationInfo>
  <TrackingID>13134738999998776655</TrackingID>
  <ApplicationJurisdiction tc="17">IL</ApplicationJurisdiction>
</ApplicationInfo>
<RequirementInfo id="Req_1" AppliesToPartyID="Party_1" FulfilerPartyID="Party_5"
RequestorContactPartyID="Party_7">
  <ReqCode tc="10">Medical Exam by Para</ReqCode>
  <RequirementDetails>Note related to this requirment</RequirementDetails>
  <ReqStatus tc="1">Pending</ReqStatus>
  <RequestedScheduleDate>2004-03-16</RequestedScheduleDate>
  <RequestedScheduleTimeStart>11:00:00</RequestedScheduleTimeStart>
  <StatusDate>2004-03-15</StatusDate>
  <RequirementAcctNum>ARR</RequirementAcctNum>
  <ProviderOrderNum>2300709</ProviderOrderNum>
  <StatusEvent>
    <StatusEventCode tc="69">Paramed appointment scheduled
  </StatusEventCode>
    <StatusEventDate>2004-03-15</StatusEventDate>
    <StatusEventTime>10:12:07</StatusEventTime>
    <StatusEventDetail>For 03/22/2004 At 3:16 PM</StatusEventDetail>
  </StatusEvent>
  <OLifEEExtension VendorCode="38"
ExtensionCode="StatusTime">11:45:07</OLifEEExtension>
</RequirementInfo>
<RequirementInfo id="Req_2" AppliesToPartyID="Party_1" FulfilerPartyID="Party_5"
RequestorContactPartyID="Party_7">
  <ReqCode tc="2">Collect Blood</ReqCode>
  <RequirementDetails>Note related to this requirment</RequirementDetails>
  <ReqStatus tc="1">Pending</ReqStatus>
  <StatusDate>2004-03-15</StatusDate>
  <RequirementAcctNum>ARR</RequirementAcctNum>
  <ProviderOrderNum>2300709</ProviderOrderNum>
  <StatusEvent>
    <StatusEventCode tc="13">unavailable until</StatusEventCode>
    <StatusEventDate>2004-03-15</StatusEventDate>
    <StatusEventTime>10:12:07</StatusEventTime>
    <StatusEventDetail>Applicant went out of town for two weeks
  </StatusEventDetail>
  </StatusEvent>
  <OLifEEExtension VendorCode="38"
ExtensionCode="StatusTime">11:45:07</OLifEEExtension>
</RequirementInfo>
<RequirementInfo id="Req_3" AppliesToPartyID="Party_1" FulfilerPartyID="Party_6"
RequestorContactPartyID="Party_7">
  <ReqCode tc="498">Analyze Blood</ReqCode>
  <RequirementDetails>Note related to this requirment</RequirementDetails>
  <ReqStatus tc="1">Pending</ReqStatus>
  <StatusDate>2004-03-15</StatusDate>
  <RequirementAcctNum>ARR</RequirementAcctNum>
  <ProviderOrderNum>2300709</ProviderOrderNum>
  <OLifEEExtension VendorCode="38"
ExtensionCode="StatusTime">11:45:07</OLifEEExtension>
```

*Sample Status Transmittal Continued on next page*

**Sample Status Files – ACORD 1122 Requirements Status Request Message file**

```
</RequirementInfo>
  <RequirementInfo id="Req_4" AppliesToPartyID="Party_1" FulfillerPartyID="Party_5"
RequestorContactPartyID="Party_7">
  <ReqCode tc="5">Collect Urine</ReqCode>
  <RequirementDetails>Note related to this requirement</RequirementDetails>
  <ReqStatus tc="1">Pending</ReqStatus>
  <StatusDate>2004-03-15</StatusDate>
  <RequirementAcctNum>ARR</RequirementAcctNum>
  <ProviderOrderNum>2300709</ProviderOrderNum>
  <StatusEvent>
    <StatusEventCode tc="13">unavailable until</StatusEventCode>
    <StatusEventDate>2004-03-15</StatusEventDate>
    <StatusEventTime>10:12:07</StatusEventTime>
    <StatusEventDetail>Applicant went out of town for two weeks
  </StatusEventDetail>
  </StatusEvent>
  <OLifEEExtension VendorCode="38"
ExtensionCode="StatusTime">11:45:07</OLifEEExtension>
  </RequirementInfo>
  <RequirementInfo id="Req_5" AppliesToPartyID="Party_1" FulfillerPartyID="Party_6"
RequestorContactPartyID="Party_7">
  <ReqCode tc="499">Analyze Urine</ReqCode>
  <RequirementDetails>Note related to this requirement</RequirementDetails>
  <ReqStatus tc="1">Pending</ReqStatus>
  <StatusDate>2004-03-15</StatusDate>
  <RequirementAcctNum>ARR</RequirementAcctNum>
  <ProviderOrderNum>2300709</ProviderOrderNum>
  <OLifEEExtension VendorCode="38"
ExtensionCode="StatusTime">11:45:07</OLifEEExtension>
  </RequirementInfo>
  <RequirementInfo id="Req_6" AppliesToPartyID="Party_1" FulfillerPartyID="Party_5"
RequestorContactPartyID="Party_7">
  <ReqCode tc="13">EKG</ReqCode>
  <ReqStatus tc="1">Pending</ReqStatus>
  <StatusDate>2004-03-15</StatusDate>
  <RequirementAcctNum>ARR</RequirementAcctNum>
  <ProviderOrderNum>2300709</ProviderOrderNum>
  <StatusEvent>
    <StatusEventCode tc="13">unavailable until</StatusEventCode>
    <StatusEventDate>2004-03-15</StatusEventDate>
    <StatusEventTime>10:12:07</StatusEventTime>
    <StatusEventDetail>Applicant went out of town for two weeks
  </StatusEventDetail>
  </StatusEvent>
  <OLifEEExtension VendorCode="38"
ExtensionCode="StatusTime">11:45:07</OLifEEExtension>
  </RequirementInfo>
  <RequirementInfo id="Req_7" AppliesToPartyID="Party_1" FulfillerPartyID="Party_8"
RequestorContactPartyID="Party_7">
```

*Sample Status Transmittal Continued on next page*

**Sample Status Files – ACORD 1122 Requirements Status Request Message file**

```
<ReqCode tc="147">Motor Vehicle Report</ReqCode>
<RequirementDetails>Note related to this requirement</RequirementDetails>
<ReqStatus tc="11">Completed</ReqStatus>
<FulfilledDate>2004-03-15</FulfilledDate>
<StatusDate>2004-03-15</StatusDate>
<RequirementAcctNum>ARR</RequirementAcctNum>
<ProviderOrderNum>2300709</ProviderOrderNum>
<StatusEvent>
  <StatusEventCode tc="28">Completed as scheduled</StatusEventCode>
  <StatusEventDate>2004-03-15</StatusEventDate>
  <StatusEventTime>10:12:07</StatusEventTime>
  <StatusEventDetail>Note related to this status event</StatusEventDetail>
</StatusEvent>
<OLifEEExtension VendorCode="38"
ExtensionCode="StatusTime">11:45:07</OLifEEExtension>
<OLifEEExtension VendorCode="38"
ExtensionCode="FulfilledTime">10:12:07</OLifEEExtension>
</RequirementInfo>
<RequirementInfo id="Req_8" AppliesToPartyID="Party_1" FillerPartyID="Party_9"
RequestorContactPartyID="Party_7">
  <ReqCode tc="139">Inspection Report</ReqCode>
  <RequirementDetails>Note related to this requirement</RequirementDetails>
  <ReqStatus tc="1">Pending</ReqStatus>
  <StatusDate>2004-03-15</StatusDate>
  <RequirementAcctNum>ARR</RequirementAcctNum>
  <ProviderOrderNum>2300709</ProviderOrderNum>
  <StatusEvent>
    <StatusEventCode tc="2">Left Message at applicant's home
  </StatusEventCode>
    <StatusEventDate>2004-03-15</StatusEventDate>
    <StatusEventTime>08:35:16</StatusEventTime>
  </StatusEvent>
  <StatusEvent>
    <StatusEventCode tc="13">unavailable until</StatusEventCode>
    <StatusEventDate>2004-03-15</StatusEventDate>
    <StatusEventTime>10:12:07</StatusEventTime>
    <StatusEventDetail>Applicant went out of town for two weeks
  </StatusEventDetail>
  </StatusEvent>
  <OLifEEExtension VendorCode="38"
ExtensionCode="StatusTime">11:45:07</OLifEEExtension>
</RequirementInfo>
<RequirementInfo id="Req_9" AppliesToPartyID="Party_1" FillerPartyID="Party_10"
RequestorContactPartyID="Party_7">
```

*Sample Status Transmittal Continued on next page*

**Sample Status Files – ACORD 1122 Requirements Status Request Message file**

```

                <ReqCode tc="11">Attending Physician Statement</ReqCode>
                <RequirementDetails>notes related to this requirement
</RequirementDetails>
                <ReqStatus tc="11">Completed</ReqStatus>
                <FulfilledDate>2004-03-15</FulfilledDate>
                <StatusDate>2004-03-15</StatusDate>
                <RequirementAcctNum>ARR</RequirementAcctNum>
                <ProviderOrderNum>2300709</ProviderOrderNum>
                <StatusEvent>
                    <StatusEventCode tc="28">Completed as scheduled</StatusEventCode>
                    <StatusEventDate>2004-03-15</StatusEventDate>
                    <StatusEventTime>10:12:07</StatusEventTime>
                    <StatusEventDetail>Note related to this status event</StatusEventDetail>
                </StatusEvent>
                <OLifEEExtension VendorCode="38"
ExtensionCode="StatusTime">11:45:07</OLifEEExtension>
                <OLifEEExtension VendorCode="38"
ExtensionCode="FulfilledTime">10:12:07</OLifEEExtension>
                <OLifEEExtension VendorCode="38"
ExtensionCode="PhysicianPartyID">Party_11</OLifEEExtension>
                <OLifEEExtension VendorCode="38"
ExtensionCode="MedicalFacilityPartyID">Party_12</OLifEEExtension>
                </RequirementInfo>
            </Policy>
        </Holding>
        <Party id="Party_1">
            <PartyTypeCode tc="1">Person</PartyTypeCode>
            <GovtID>325667899</GovtID>
            <Person>
                <FirstName>John</FirstName>
                <MiddleName>M</MiddleName>
                <LastName>Alexander</LastName>
                <Prefix>Mr.</Prefix>
                <Suffix>Jr.</Suffix>
                <Occupation>Mechanic</Occupation>
                <MarStat tc="1">Married</MarStat>
                <Gender tc="1">M</Gender>
                <BirthDate>1971-04-15</BirthDate>
                <Age>33</Age>
                <DriversLicenseNum>VA12443566-0021</DriversLicenseNum>
                <DriversLicenseState tc="55">VA</DriversLicenseState>
            </Person>
        </Party>
        <Party id="Party_2">
            <PartyTypeCode tc="2">Organization</PartyTypeCode>
            <FullName>Insurance Company</FullName>
            <Organization>
                <OrgForm tc="23">Corporation</OrgForm>
                <ACORDVendorCode>112</ACORDVendorCode>
            </Organization>

```

*Sample Status Transmittal Continued on next page*

**Sample Status Files – ACORD 1122 Requirements Status Request Message file**

```
</Party>
<Party id="Party_3">
  <PartyTypeCode tc="1">Person</PartyTypeCode>
  <Person>
    <FirstName>Anne</FirstName>
    <MiddleName>J</MiddleName>
    <LastName>Alexander</LastName>
  </Person>
</Party>
<Party id="Party_4">
  <PartyTypeCode tc="2">Organization</PartyTypeCode>
  <FullName>Discount Auto Repair</FullName>
  <Organization>
    <OrgForm tc="23">Corporation</OrgForm>
  </Organization>
  <Address>
    <AddressTypeCode tc="2">Business</AddressTypeCode>
    <Line1>300 Nicks St</Line1>
    <City>Allentown</City>
    <AddressStateTC tc="37">NY</AddressStateTC>
    <Zip>12232</Zip>
  </Address>
  <Phone>
    <PhoneTypeCode tc="2">Business</PhoneTypeCode>
    <AreaCode>725</AreaCode>
    <DialNumber>1913346</DialNumber>
  </Phone>
</Party>
<Party id="Party_5">
  <PartyTypeCode tc="2">Organization</PartyTypeCode>
  <FullName>ExamOne</FullName>
  <Organization>
    <OrgForm tc="23">Corporation</OrgForm>
    <OrgCode>EXAM1</OrgCode>
    <ACORDVendorCode>119</ACORDVendorCode>
  </Organization>
</Party>
<Party id="Party_6">
  <PartyTypeCode tc="2">Organization</PartyTypeCode>
  <FullName>ExamOne</FullName>
  <Organization>
    <OrgForm tc="23">Corporation</OrgForm>
    <OrgCode>LAB1</OrgCode>
    <ACORDVendorCode>38</ACORDVendorCode>
  </Organization>
</Party>
```

*Sample Status Transmittal Continued on next page*

**Sample Status Files – ACORD 1122 Requirements Status Request Message file**

```
</Party>
<Party id="Party_7">
  <PartyTypeCode tc="1">Person</PartyTypeCode>
  <FullName>Kim Wiley</FullName>
  <Person/>
  <Phone>
    <PhoneTypeCode tc="2">Business</PhoneTypeCode>
    <AreaCode>725</AreaCode>
    <DialNumber>9065543</DialNumber>
    <Ext>1985</Ext>
  </Phone>
  <Phone>
    <PhoneTypeCode tc="4">Business Fax</PhoneTypeCode>
    <AreaCode>725</AreaCode>
    <DialNumber>9065548</DialNumber>
  </Phone>
  <EmailAddress>
    <AddrLine>underwriter@Insurance Company.com</AddrLine>
  </EmailAddress>
</Party>
<Party id="Party_8">
  <PartyTypeCode tc="2">Organization</PartyTypeCode>
  <FullName>Intellisys</FullName>
  <Organization>
    <OrgForm tc="23">Corporation</OrgForm>
    <OrgCode>MVR1</OrgCode>
    <ACORDVendorCode>120</ACORDVendorCode>
  </Organization>
</Party>
<Party id="Party_9">
  <PartyTypeCode tc="2">Organization</PartyTypeCode>
  <FullName>First Financial</FullName>
  <Organization>
    <OrgForm tc="23">Corporation</OrgForm>
    <OrgCode>FF</OrgCode>
    <ACORDVendorCode>117</ACORDVendorCode>
  </Organization>
</Party>
<Party id="Party_10">
  <PartyTypeCode tc="2">Organization</PartyTypeCode>
  <FullName>Intellisys</FullName>
  <Organization>
    <OrgForm tc="23">Corporation</OrgForm>
    <OrgCode>SBSIM4</OrgCode>
    <ACORDVendorCode>120</ACORDVendorCode>
  </Organization>
</Party>
```

*Sample Status Transmittal Continued on next page*

**Sample Status Files – ACORD 1122 Requirements Status Request Message file**

```
<Party id="Party_11">
  <PartyTypeCode tc="1">Person</PartyTypeCode>
  <Person>
    <FirstName>Charles</FirstName>
    <MiddleName>G</MiddleName>
    <LastName>Todd</LastName>
  </Person>
  <Address>
    <AddressTypeCode tc="2">Business</AddressTypeCode>
    <Line1>157 Brooklyn Cir</Line1>
    <Line2>Suite 102</Line2>
    <City>Austin</City>
    <AddressStateTC tc="37">NY</AddressStateTC>
    <Zip>12232</Zip>
  </Address>
  <Phone>
    <PhoneTypeCode tc="2">Business</PhoneTypeCode>
    <AreaCode>725</AreaCode>
    <DialNumber>4445875</DialNumber>
  </Phone>
</Party>
<Party id="Party_12">
  <PartyTypeCode tc="2">Organization</PartyTypeCode>
  <FullName>ABC Medical Clinic</FullName>
  <Organization>
    <OrgForm tc="23">Corporation</OrgForm>
  </Organization>
</Party>
<Relation id="Relation_1" OriginatingObjectID="Holding_1" RelatedObjectID="Party_1">
  <OriginatingObjectType tc="4">Holding</OriginatingObjectType>
  <RelatedObjectType tc="6">Party</RelatedObjectType>
  <RelationRoleCode tc="32">Insured</RelationRoleCode>
</Relation>
<Relation id="Relation_2" OriginatingObjectID="Holding_1" RelatedObjectID="Party_2">
  <OriginatingObjectType tc="4">Holding</OriginatingObjectType>
  <RelatedObjectType tc="6">Party</RelatedObjectType>
  <RelationRoleCode tc="87">Carrier</RelationRoleCode>
</Relation>
<Relation id="Relation_3" OriginatingObjectID="Party_1" RelatedObjectID="Party_4">
  <OriginatingObjectType tc="6">Party</OriginatingObjectType>
  <RelatedObjectType tc="6">Party</RelatedObjectType>
  <RelationRoleCode tc="7">Employer</RelationRoleCode>
</Relation>
</OLife>
</TXLifeRequest>
</TXLife>
```

*Sample Status Transmittal Continued on next page*

## Appendix I – Sample Results Transmittal

### Sample Results Files – ACORD 1122 Requirements Results Request Message file

```
<?xml version="1.0" encoding="UTF-8" standalone="no"?>
<TXLife xmlns="http://ACORD.org/Standards/Life/2" xmlns:xsi="http://www.w3.org/2001/XMLSchema-instance"
xsi:schemaLocation="http://ACORD.org/Standards/Life/2 TXLife2.10.00enum.xsd">
  <UserAuthRequest>
    <UserLoginName>ExamOne</UserLoginName>
    <UserPswd>
      <CryptType>NONE</CryptType>
      <Pswd/>
    </UserPswd>
    <VendorApp>
      <VendorName VendorCode="38">ExamOne</VendorName>
      <AppName>CaseCentral</AppName>
      <AppVer>1.3</AppVer>
    </VendorApp>
  </UserAuthRequest>
  <TXLifeRequest>
    <TransRefGUID>L1_1270858</TransRefGUID>
    <TransType tc="1122">General Requirements Status/Results Transmittal</TransType>
    <TransExeDate>2005-03-21</TransExeDate>
    <TransExeTime>10:14:07</TransExeTime>
    <TransMode tc="2">Original</TransMode>
    <NoResponseOK tc="0">False</NoResponseOK>
    <TestIndicator tc="1">True</TestIndicator>
    <OLife>
      <SourceInfo>
        <SourceInfoName>CaseOne</SourceInfoName>
      </SourceInfo>
      <Holding id="Holding_1">
        <HoldingTypeCode tc="2">Policy</HoldingTypeCode>
        <HoldingForm tc="1">Individual</HoldingForm>
        <Policy CarrierPartyID="Party_2">
          <PolNumber>UH021549N</PolNumber>
          <LineOfBusiness tc="1">Life</LineOfBusiness>
          <ProductType tc="2">Term</ProductType>
          <ProductCode>17814</ProductCode>
          <PolicyStatus tc="12">Proposed</PolicyStatus>
          <Life>
            <FaceAmt>500000</FaceAmt>
            <Coverage id="Coverage_1">
              <IndicatorCode tc="1">Base</IndicatorCode>
              <LifeParticipant id="Participant_1" PartyID="Party_1">
                <LifeParticipantRoleCode tc="1">Primary Insured
              </LifeParticipantRoleCode>
            </LifeParticipant>
            <LifeParticipant id="Participant_2" PartyID="Party_3">
              <LifeParticipantRoleCode tc="7">Beneficiary-Primary
            </LifeParticipant>
          </Life>
        </Policy>
      </Holding>
    </OLife>
  </TXLifeRequest>
</TXLife>
```

*Sample Results Transmittal Continued on next page*

**Sample Results Files – ACORD 1122 Requirements Results Request Message file**

```
</LifeParticipantRoleCode>
  </LifeParticipant>
  </Coverage>
</Life>
<ApplicationInfo>
  <TrackingID>131347389999988776655</TrackingID>
  <ApplicationJurisdiction tc="17">IL</ApplicationJurisdiction>
</ApplicationInfo>
<RequirementInfo id="Req_1" AppliesToPartyID="Party_1" FulfillerPartyID="Party_5"
RequestorContactPartyID="Party_7">
  <ReqCode tc="10">Perform Examination By Paramed</ReqCode>
  <RequirementDetails>Note related to this requirement</RequirementDetails>
  <ReqStatus tc="11">Complete</ReqStatus>
  <StatusDate>2005-03-20</StatusDate>
  <RequirementAcctNum>ARR</RequirementAcctNum>
  <ProviderOrderNum>2300709</ProviderOrderNum>
  <StatusEvent>
    <StatusEventCode tc="2147483647">Other</StatusEventCode>
    <StatusEventDate>2005-03-21</StatusEventDate>
    <StatusEventTime>10:12:07</StatusEventTime>
  </StatusEvent>
  <Attachment>
    <AttachmentData>http://www.ExamOne.com/Insurance
Company/result/images/12342343.tiff</AttachmentData>
    <AttachmentType tc="2147483647"/>
    <MimeTypeTC tc="11">Image/Tiff</MimeTypeTC>
    <AttachmentLocation tc="2">URL Reference</AttachmentLocation>
  </Attachment>
  <OLifEExtension VendorCode="38"
ExtensionCode="StatusTime">08:15:20</OLifEExtension>
</RequirementInfo>
<RequirementInfo id="Req_2" AppliesToPartyID="Party_1" FulfillerPartyID="Party_6"
RequestorContactPartyID="Party_7">
  <ReqCode tc="498">Analyze Blood Sample</ReqCode>
  <RequirementDetails>Note related to this requirement</RequirementDetails>
  <ReqStatus tc="11">Complete</ReqStatus>
  <StatusDate>2005-03-20</StatusDate>
  <RequirementAcctNum>ARR</RequirementAcctNum>
  <ProviderOrderNum>2300709</ProviderOrderNum>
  <StatusEvent>
    <StatusEventCode tc="2147483647">Other</StatusEventCode>
    <StatusEventDate>2005-03-21</StatusEventDate>
    <StatusEventTime>10:12:07</StatusEventTime>
  </StatusEvent>
  <Attachment>
    <AttachmentData>http://www.ExamOne.com/Insurance
Company/result/images/123008741.tiff</AttachmentData>
    <AttachmentType tc="23">Lab Data</AttachmentType>
    <MimeTypeTC tc="11">Image/Tiff</MimeTypeTC>
    <AttachmentLocation tc="2">URL Reference</AttachmentLocation>
  </Attachment>
```

*Sample Results Transmittal Continued on next page*

**Sample Results Files – ACORD 1122 Requirements Results Request Message file**

```
<OLifEEExtension VendorCode="38"
ExtensionCode="StatusTime">11:45:07</OLifEEExtension>
  </RequirementInfo>
  <RequirementInfo id="Req_3" AppliesToPartyID="Party_1" FillerPartyID="Party_6"
RequestorContactPartyID="Party_7">
  <ReqCode tc="499">Analyze Urine Specimen(HOS)</ReqCode>
  <RequirementDetails>Note related to this requirement</RequirementDetails>
  <ReqStatus tc="11">Complete</ReqStatus>
  <StatusDate>2005-03-20</StatusDate>
  <RequirementAcctNum>ARR</RequirementAcctNum>
  <ProviderOrderNum>2300709</ProviderOrderNum>
  <StatusEvent>
    <StatusEventCode tc="2147483647">Other</StatusEventCode>
    <StatusEventDate>2005-03-21</StatusEventDate>
    <StatusEventTime>10:12:07</StatusEventTime>
  </StatusEvent>
  <Attachment>
    <AttachmentData>http://www.ExamOne.com/Insurance
Company/result/images/123008741.tiff</AttachmentData>
    <AttachmentType tc="23">Lab Data</AttachmentType>
    <MimeTypeTC tc="11">Image/Tiff</MimeTypeTC>
    <AttachmentLocation tc="2">URL Reference</AttachmentLocation>
  </Attachment>
  <OLifEEExtension VendorCode="38"
ExtensionCode="StatusTime">11:45:07</OLifEEExtension>
  </RequirementInfo>
  <RequirementInfo id="Req_4" AppliesToPartyID="Party_1" FillerPartyID="Party_8"
RequestorContactPartyID="Party_7">
  <ReqCode tc="147">Motor Vehicle Report</ReqCode>
  <RequirementDetails>Note related to this requirement</RequirementDetails>
  <ReqStatus tc="11">Completed</ReqStatus>
  <StatusDate>2005-03-15</StatusDate>
  <RequirementAcctNum>ARR</RequirementAcctNum>
  <ProviderOrderNum>2300709</ProviderOrderNum>
  <StatusEvent>
    <StatusEventCode tc="2147483647">Other</StatusEventCode>
    <StatusEventDate>2005-03-21</StatusEventDate>
    <StatusEventTime>10:12:07</StatusEventTime>
  </StatusEvent>
  <Attachment>
    <AttachmentData>Encoded results data resides here
</AttachmentData>
    <AttachmentType tc="20">Motor vehicle report information
</AttachmentType>
    <MimeTypeTC tc="11">Image/Tiff</MimeTypeTC>
    <AttachmentLocation tc="1">Inline</AttachmentLocation>
  </Attachment>
  <OLifEEExtension VendorCode="38"
ExtensionCode="StatusTime">10:45:07</OLifEEExtension>
```

*Sample Results Transmittal Continued on next page*

**Sample Results Files – ACORD 1122 Requirements Results Request Message file**

```
</RequirementInfo>
  <RequirementInfo id="Req_5" AppliesToPartyID="Party_1" FulfilerPartyID="Party_9"
RequestorContactPartyID="Party_7">
  <ReqCode tc="139">Inspection Report</ReqCode>
  <RequirementDetails>Note related to this requirement</RequirementDetails>
  <ReqStatus tc="11">Complete</ReqStatus>
  <StatusDate>2005-03-18</StatusDate>
  <RequirementAcctNum>ARR</RequirementAcctNum>
  <ProviderOrderNum>2300709</ProviderOrderNum>
  <StatusEvent>
    <StatusEventCode tc="2147483647">Other</StatusEventCode>
    <StatusEventDate>2005-03-21</StatusEventDate>
    <StatusEventTime>10:12:07</StatusEventTime>
  </StatusEvent>
  <Attachment>
    <AttachmentData>http://www.ExamOne.com/Insurance
Company/result/images/25479254.tiff</AttachmentData>
    <AttachmentType tc="24">Inspection</AttachmentType>
    <MimeTypeTC tc="11">Image/Tiff</MimeTypeTC>
    <AttachmentLocation tc="2">URL Reference</AttachmentLocation>
  </Attachment>
  <OLifEEExtension VendorCode="38"
ExtensionCode="StatusTime">08:44:40</OLifEEExtension>
</RequirementInfo>
  <RequirementInfo id="Req_6" AppliesToPartyID="Party_1" FulfilerPartyID="Party_10"
RequestorContactPartyID="Party_7">
  <ReqCode tc="11">Attending Physician Statement</ReqCode>
  <RequirementDetails>notes related to this requirement
</RequirementDetails>
  <ReqStatus tc="11">Completed</ReqStatus>
  <StatusDate>2005-03-20</StatusDate>
  <RequirementAcctNum>ARR</RequirementAcctNum>
  <ProviderOrderNum>2300709</ProviderOrderNum>
  <StatusEvent>
    <StatusEventCode tc="2147483647">Other</StatusEventCode>
    <StatusEventDate>2005-03-21</StatusEventDate>
    <StatusEventTime>10:12:07</StatusEventTime>
  </StatusEvent>
  <Attachment>
```

*Sample Results Transmittal Continued on next page*

**Sample Results Files – ACORD 1122 Requirements Results Request Message file**

```
<AttachmentData>http://www.ExamOne.com/Insurance
Company/result/images/78516571.tiff</AttachmentData>
  <AttachmentType tc="2147483647"/>
  <MimeTypeTC tc="11">Image/Tiff</MimeTypeTC>
  <AttachmentLocation tc="2">URL Reference</AttachmentLocation>
</Attachment>
  <OLifEEExtension VendorCode="38"
ExtensionCode="StatusTime">05:45:07</OLifEEExtension>
  <OLifEEExtension VendorCode="38"
ExtensionCode="PhysicianPartyID">Party_11</OLifEEExtension>
  <OLifEEExtension VendorCode="38"
ExtensionCode="MedicalFacilityPartyID">Party_12</OLifEEExtension>
</RequirementInfo>
</Policy>
</Holding>
<Party id="Party_1">
  <PartyTypeCode tc="1">Person</PartyTypeCode>
  <GovtID>325667899</GovtID>
  <Person>
    <FirstName>John</FirstName>
    <MiddleName>M</MiddleName>
    <LastName>Alexander</LastName>
    <Prefix>Mr.</Prefix>
    <Suffix>Jr.</Suffix>
    <Occupation>Mechanic</Occupation>
    <MarStat tc="1">Married</MarStat>
    <Gender tc="1">M</Gender>
    <BirthDate>1971-04-15</BirthDate>
    <Age>33</Age>
    <DriversLicenseNum>VA12443566-0021</DriversLicenseNum>
    <DriversLicenseState tc="55">VA</DriversLicenseState>
  </Person>
</Party>
<Party id="Party_2">
  <PartyTypeCode tc="2">Organization</PartyTypeCode>
  <FullName>Insurance Company</FullName>
  <Organization>
    <OrgForm tc="23">Corporation</OrgForm>
    <ACORDVendorCode>112</ACORDVendorCode>
  </Organization>
</Party>
<Party id="Party_3">
  <PartyTypeCode tc="1">Person</PartyTypeCode>
  <Person>
    <FirstName>Anne</FirstName>
    <MiddleName>J</MiddleName>
    <LastName>Alexander</LastName>
  </Person>
</Party>
<Party id="Party_4">
  <PartyTypeCode tc="2">Organization</PartyTypeCode>
  <FullName>Discount Auto Repair</FullName>
```

*Sample Results Transmittal Continued on next page*

**Sample Results Files – ACORD 1122 Requirements Results Request Message file**

```
<Organization>
  <OrgForm tc="23">Corporation</OrgForm>
</Organization>
<Address>
  <AddressTypeCode tc="2">Business</AddressTypeCode>
  <Line1>300 Nicks St</Line1>
  <City>Allentown</City>
  <AddressStateTC tc="37">NY</AddressStateTC>
  <Zip>12232</Zip>
</Address>
<Phone>
  <PhoneTypeCode tc="2">Business</PhoneTypeCode>
  <AreaCode>725</AreaCode>
  <DialNumber>1913346</DialNumber>
</Phone>
</Party>
<Party id="Party_5">
  <PartyTypeCode tc="2">Organization</PartyTypeCode>
  <FullName>ExamOne</FullName>
  <Organization>
    <OrgForm tc="23">Corporation</OrgForm>
    <OrgCode>EXAM1</OrgCode>
    <ACORDVendorCode>119</ACORDVendorCode>
  </Organization>
</Party>
<Party id="Party_6">
  <PartyTypeCode tc="2">Organization</PartyTypeCode>
  <FullName>ExamOne</FullName>
  <Organization>
    <OrgForm tc="23">Corporation</OrgForm>
    <OrgCode>LAB1</OrgCode>
    <ACORDVendorCode>38</ACORDVendorCode>
  </Organization>
</Party>
<Party id="Party_7">
  <PartyTypeCode tc="1">Person</PartyTypeCode>
  <FullName>Kim Wiley</FullName>
  <Person/>
  <Phone>
    <PhoneTypeCode tc="2">Business</PhoneTypeCode>
    <AreaCode>725</AreaCode>
    <DialNumber>9065543</DialNumber>
    <Ext>1985</Ext>
  </Phone>
  <Phone>
    <PhoneTypeCode tc="4">Business Fax</PhoneTypeCode>
    <AreaCode>725</AreaCode>
    <DialNumber>9065548</DialNumber>
  </Phone>
  <EmailAddress>
    <AddrLine>underwriter@Insurance Company.com</AddrLine>
  </EmailAddress>
```

*Sample Results Transmittal Continued on next page*

**Sample Results Files – ACORD 1122 Requirements Results Request Message file**

```
</Party>
<Party id="Party_12">
  <PartyTypeCode tc="2">Organization</PartyTypeCode>
  <FullName>ABC Medical Clinic</FullName>
  <Organization>
    <OrgForm tc="23">Corporation</OrgForm>
  </Organization>
</Party>
<Relation id="Relation_1" OriginatingObjectID="Holding_1" RelatedObjectID="Party_1">
  <OriginatingObjectType tc="4">Holding</OriginatingObjectType>
  <RelatedObjectType tc="6">Party</RelatedObjectType>
  <RelationRoleCode tc="32">Insured</RelationRoleCode>
</Relation>
<Relation id="Relation_2" OriginatingObjectID="Holding_1" RelatedObjectID="Party_2">
  <OriginatingObjectType tc="4">Holding</OriginatingObjectType>
  <RelatedObjectType tc="6">Party</RelatedObjectType>
  <RelationRoleCode tc="87">Carrier</RelationRoleCode>
</Relation>
<Relation id="Relation_3" OriginatingObjectID="Party_1" RelatedObjectID="Party_4">
  <OriginatingObjectType tc="6">Party</OriginatingObjectType>
  <RelatedObjectType tc="6">Party</RelatedObjectType>
  <RelationRoleCode tc="7">Employer</RelationRoleCode>
</Relation>
</OLife>
</TXLifeRequest>
</TXLife>
```